



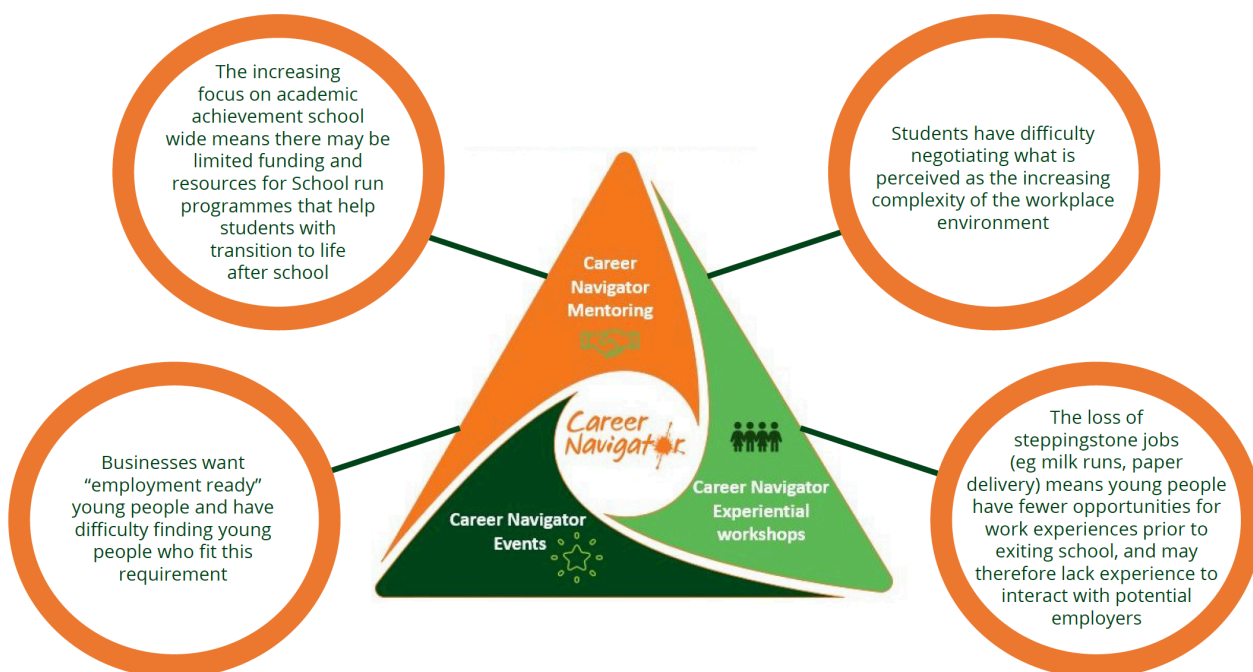
Kia Ora

Term 3 is getting underway. Our team have been super busy helping empower tamariki and rangatahi.

In Term 2 we have welcomed Richmond School in Napier who have come on board as a Kiwi Can School. The team are looking forward to making a positive contribution at Richmond School.

Programme Snapshot

Career Navigator was developed in response to requests from employers and schools who identified that many New Zealand youth are leaving school too soon and without being ready for employment. The programme helps rangatahi navigate the complexities of the making the transition from school to employment or further education.



High Five Moment

Each term, our Kiwi Can team focus on one Kiwi Can theme of Respect, Positive Relationships, Resilience and Integrity.

This term we focused on Positive Relationships - Whakawhanaungatanga. The lessons are focused on positive communications, co-operation, friendship, fairness and fair play, leadership and conflict resolution. All great things we can all learn about to make a better community.

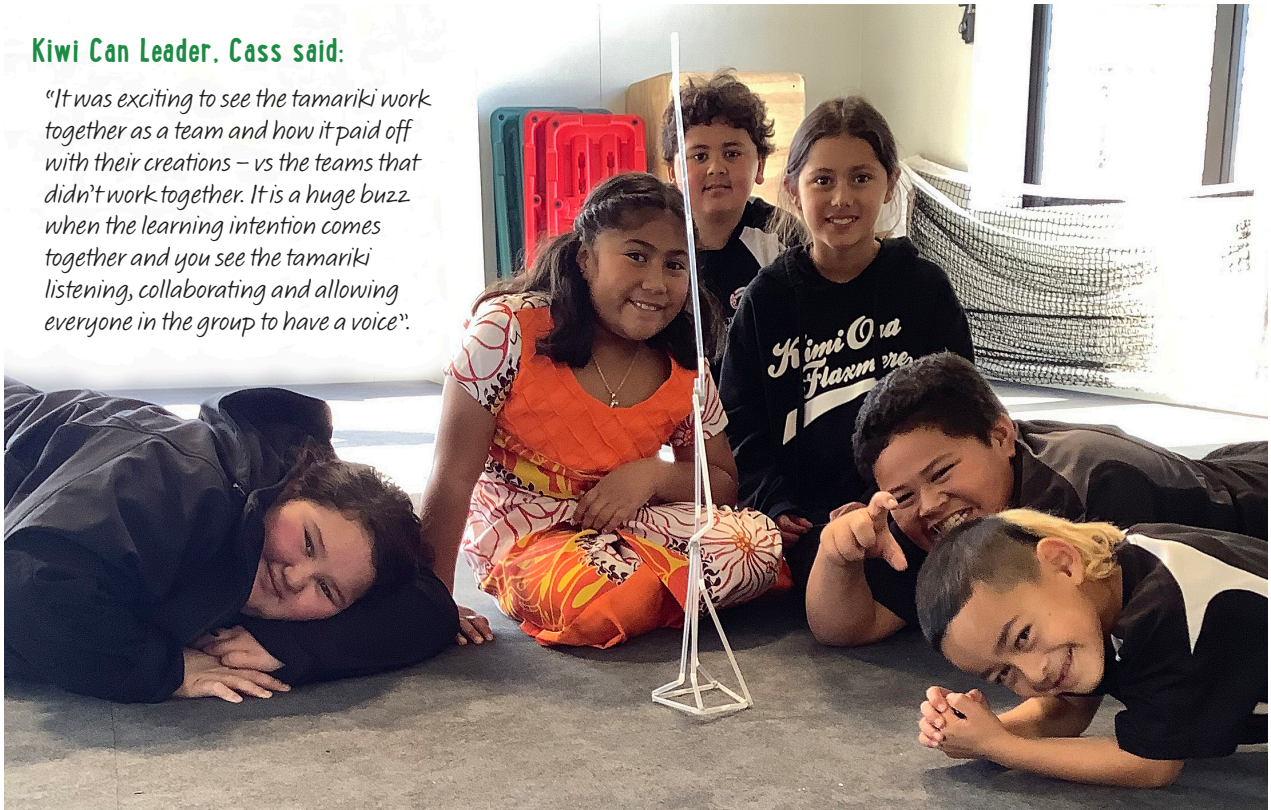
Learning intention: To listen

Involved: Working together in a team and collaborating to create a tower structure out of straws and blu tack.

How to: Tamariki had to collaborate and learn to sit and listen to each others' ideas. They had to make sure everyone had a voice.

Kiwi Can Leader. Cass said:

"It was exciting to see the tamariki work together as a team and how it paid off with their creations – vs the teams that didn't work together. It is a huge buzz when the learning intention comes together and you see the tamariki listening, collaborating and allowing everyone in the group to have a voice".



How your help is making a difference to Hawke's Bay kids

We've been busy. Reaching more tamariki and rangatahi.

2,250+

Number of Kiwi Can
and Career Navigator
STUDENTS

6

Number of **SCHOOLS**
Kiwi Can programmes
run in...

Ebbett Park School
Hastings Intermediate
Heretaunga Intermediate
Richmond School
Te Kura o Kimi Ora
Te Kura o Paki Paki

4

Number of **SCHOOLS**
connected to Career
Navigator...

Full programme
Flaxmere College

Part programme
William Colenso College

Pathway Experience
Karamu High School
Hastings Girls High School

CAREER PATHWAYS

Career Experience Pathways 2021

This year is going to be a cracker with three Career Experience Pathways scheduled. We've already completed Flaxmere College in Term 2 and have Karamu High School and Hastings Girls High School in Term 3. It is an interactive experience for rangatahi to engage directly with businesses and industry (not a brochure and lollipop fest). By the end of each session rangatahi should be able to:

1. Identify school subject choices and how these link to a future career pathway or training.
2. Identify what is expected of them to be successful in the workplace.
3. Form greater connections to workplaces in their community.

Feedback from students and businesses has been awesome and we know that the format is working.

"Turn up on time, have a positive attitude (can-do attitude) and be organised."

STUDENT HIGHLIGHT

"It was great seeing young people interested in roles at the Port and realising not just doctors and lawyers make money/are the only careers available."

NAPIER PORT



Napier Port team engage with rangatahi at the Flaxmere College Pathway Experience

Keen to know more? Read more about the amazing outcomes from the [event](#)



Tips with Halberg

This term the Kiwi Can Team Leaders met with the Halberg Foundation. The Kiwi Can Leaders came away fizzing with practical ways to adapt the learning games to be more inclusive for all tamariki and rangatahi. Halberg believes inclusion is belonging; being accepted, empowered; valued; and actively participating within a group structure or activity.

Here are a couple of the Halberg games to try:



TARGET GAMES

Snake

What you need:

- Multiple Balls

Instructions:

Roll the first ball out; this is the head of the snake. Take turns to roll different balls - aiming to line each ball up behind the head of the snake. See how long you can make the snake. If a ball goes beyond the head of the snake, retrieve it and roll again.

Or
Vary the size of the balls and rolling distance to make it easier or more challenging.



Bowling

What you need:

- Ball
- Plastic Bottles

Instructions:

Set up bottles as bowling pins and roll the ball to see how many you can knock over. You can number the bottles and add them up as the score.

Or
Vary the size of the ball and rolling distance to make it easier or more challenging.



Our schools are multi-cultural and we are keen to encourage you to learn other languages

This newsletter we are celebrating the Samoan language:

hello	talofa	mum	tina	sister	tuafafine
children	fanau	dad	tamā	brother	tuagane
family	aiga				

